


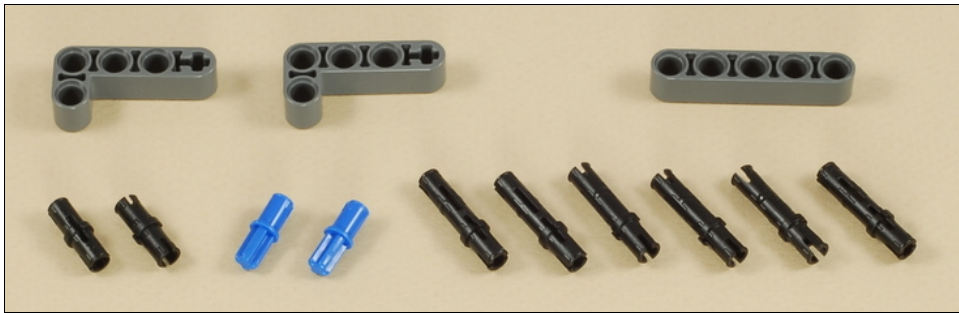
# MTV Castor Wheel

Building: 

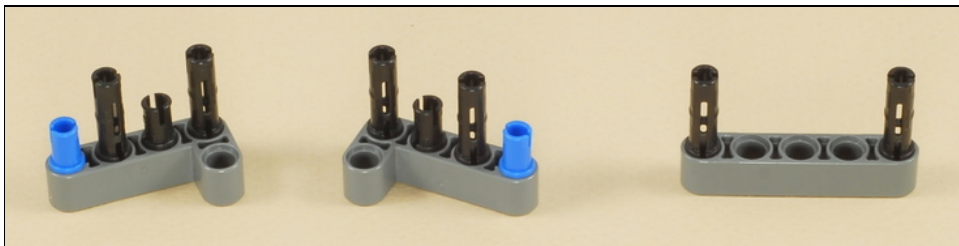
Designed for **NXT 1.0** (8527 or 9797+9648)

## Building Instructions

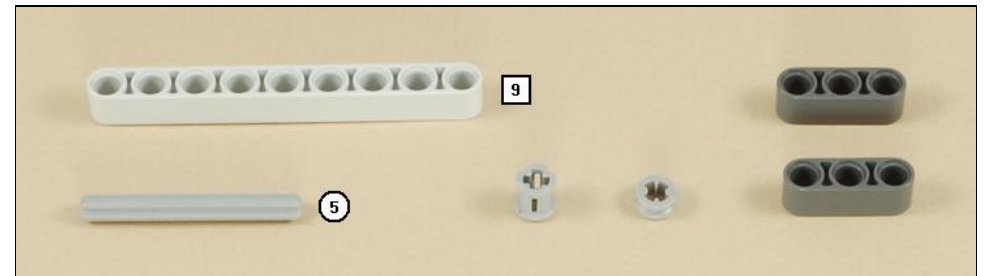
### 1

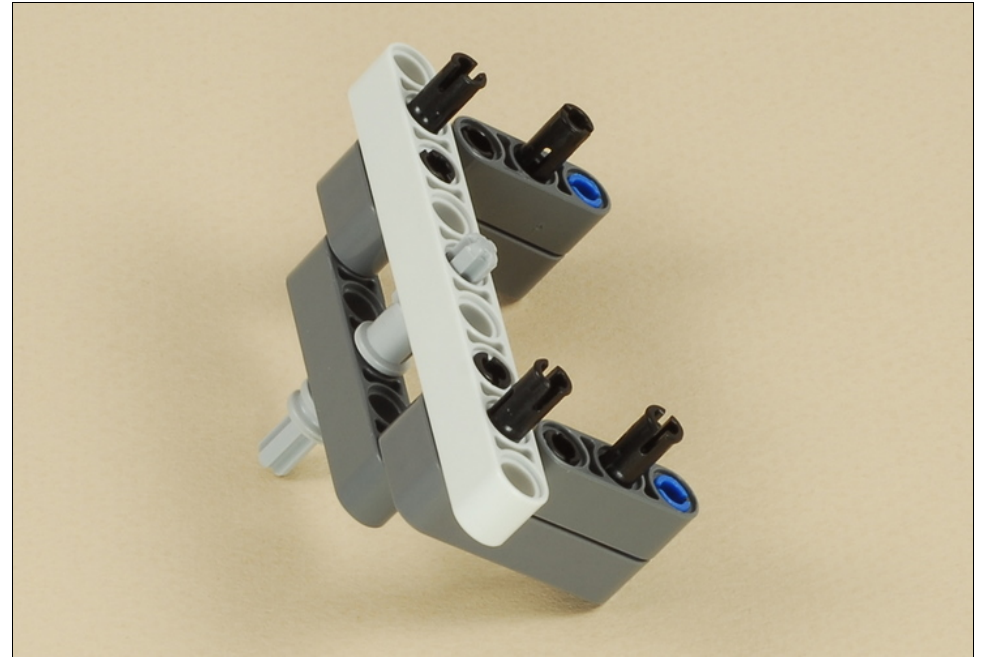
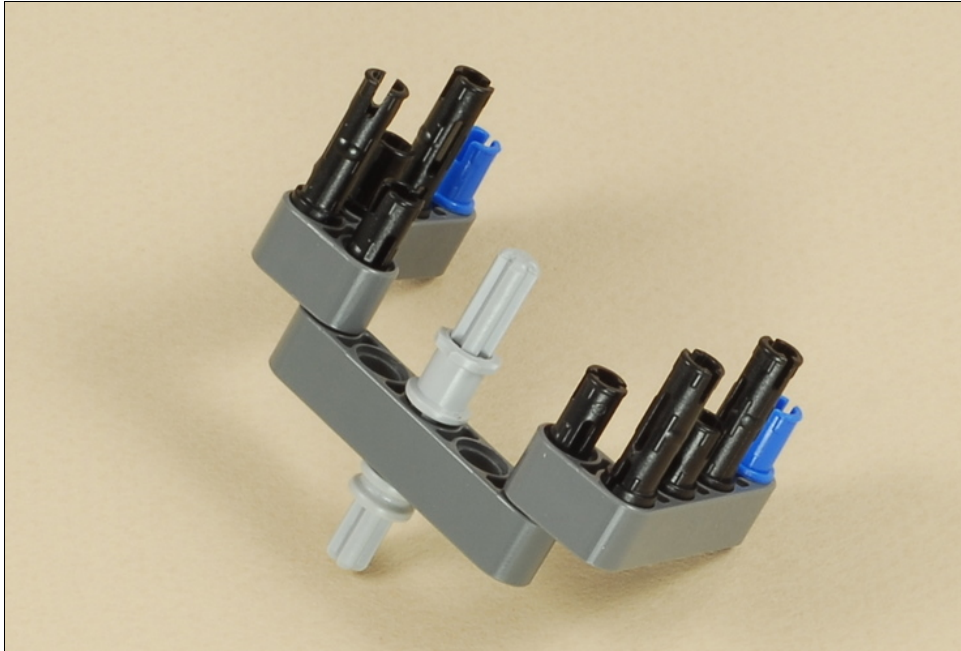


**Important:** Make sure that the short side of the long pins is inserted into the beams as shown below.



### 2





### 3

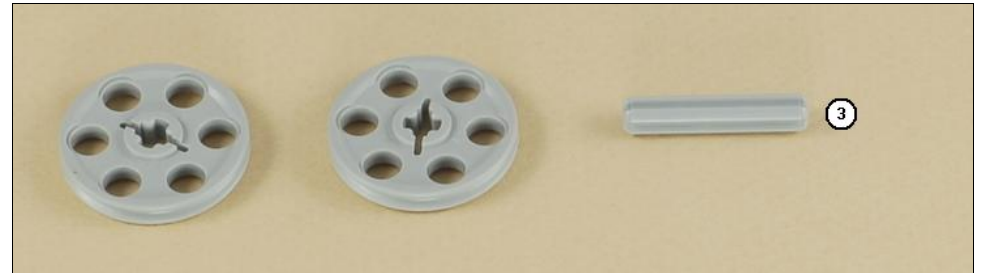


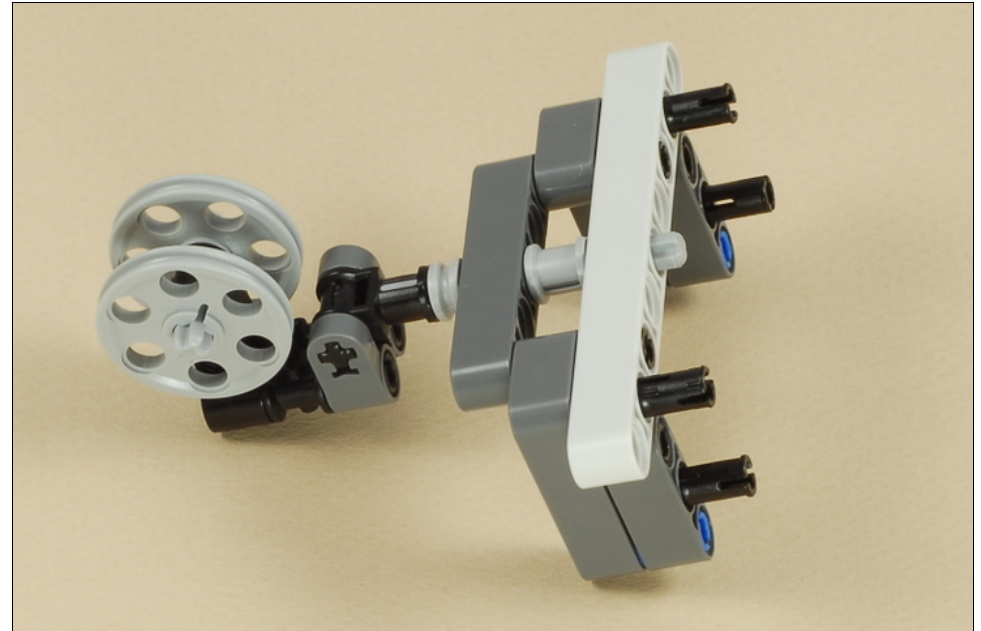


4



5





[Back to Instructions for MTV Modules](#)

[Home](#) [Projects](#) [Help](#) [Contacts](#)

Copyright © 2007-2009 by Dave Parker. All rights reserved.  
All project designs, images, and programs are protected by copyright. Please see the [usage policy](#).